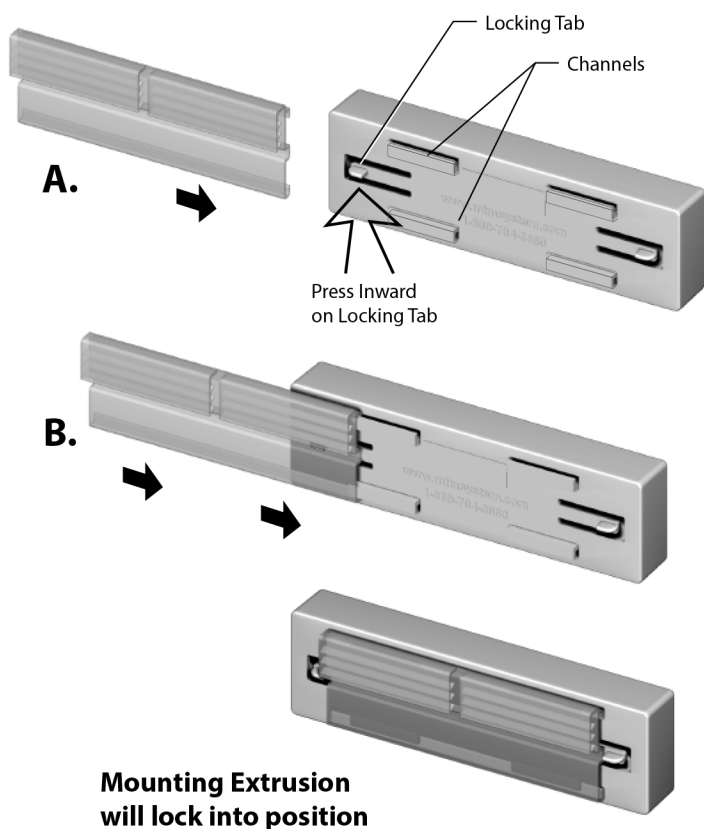


# Scroll Pricer

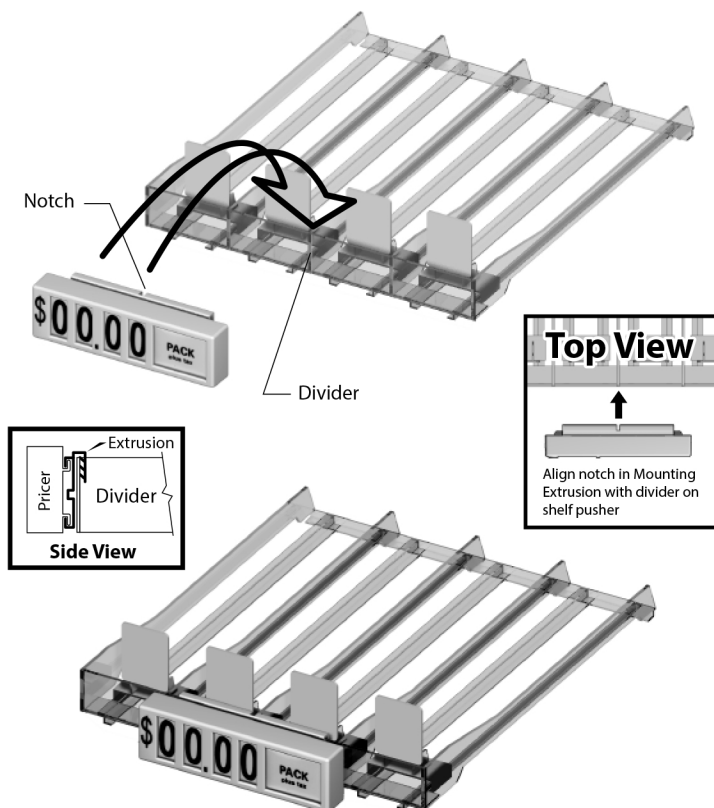
## For use with Mounting Extrusion

- 1.** A. Push the Locking Tab inward on the backside of the Pricer.

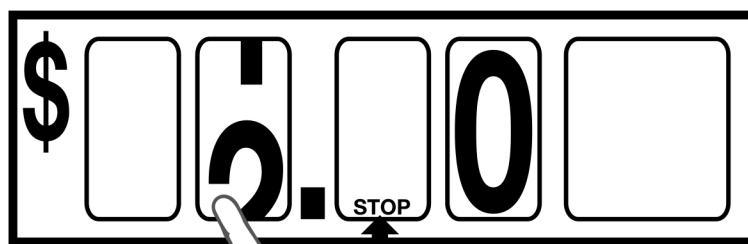
B. Slide the Mounting Extrusion onto the channels.



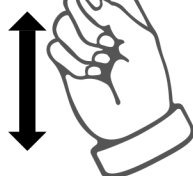
- 2.** Attach Pricer and Extrusion onto the front of Pusher Shelf. **Note:** Align the notch on the Mounting Extrusion with the divider panel on pusher shelf.



- 3.** How To Set The Price And Message



With finger tip, push scroll up or down until desired numeral appears, center in window.



When "STOP" appears, do not scroll any further.